



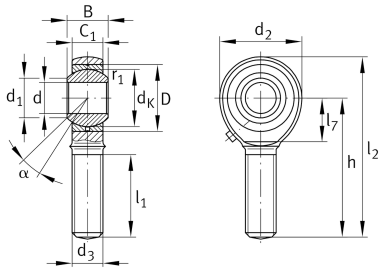
GAKR5-PB-A

Rod end

Schaeffler ID:
0066336170000

Rod end with external thread, right hand thread, requiring maintenance, sliding contact surface: steel/bronze, DIN ISO 12240-4, dimension series K, type M, open design

Technical information



Main Dimensions & Performance Data

d	5 mm	Bore diameter bearing
D	13 mm	Outside diameter bearing
B	8 mm	Width inner ring
C _r	3,330 N	Basic dynamic load rating, radial
C _{0r}	4,900 N	Basic static load rating, radial
	16.765 g	Weight

Dimensions

d _K	11.112 mm	Ball diameter
d ₁	7.7 mm	Outer flange diameter inner ring
d ₂	18 mm	Outer eye diameter
d ₃	M5	Thread size
h	33 mm	Shank Length External thread rod
C ₁	6 mm	Width of the rod end
α	13 °	Tilt angle
l ₁	19 mm	Shank Length External thread head
l ₂	42 mm	Total length external thread head
G _r	0 - 0,035 mm	Radial Clearance
d _{OT}	0.012 mm	Bore diameter bearing, upper tolerance
d _{UT}	0 mm	Bore diameter bearing, lower tolerance
d _T	H7 mm	Bore diameter bearing, tolerance
B _{OT}	0 mm	Width inner ring, upper tolerance
B _{UT}	-0.12 mm	Width inner ring, lower tolerance

Mounting dimensions

r _{1smin}	0.3 mm	Edge Spacing
--------------------	--------	--------------

Temperature range

T _{min}	-60 °C	Operating temperature min.
T _{max}	250 °C	Operating temperature max.